

FY20 Illinois
CHILD CARE
Program Report





Vision for Child Care and Early Education in Illinois

Illinois families will have multiple options for affordable quality child care and early education. All children starting at birth will be offered opportunities to grow, learn and be cared for in safe, nurturing, culturally and developmentally appropriate settings.

Introduction

As required by State Statute 20 ILCS 505/5.15, the Illinois Department of Human Services (IDHS) submits an annual report to the Governor and Illinois General Assembly about the status of its child care program. The program is administered by the IDHS Office of Early Childhood (OEC); this report includes information on the Child Care Assistance Program (CCAP), including response to the COVID-19 Pandemic within CCAP and Quality Improvement Programs. The 2020 Illinois Child Care Report includes information for the Fiscal Year 2020 (July 1, 2019 – June 30, 2020), FY19 and FY18. The data in this report are from: a) the Child Care Management System (CCMS), b) the Illinois Network of Child Care Resource and Referral Agencies' (INCCRRA) aggregate database of the local Child Care Resource and Referral (CCR&R) parent customers, child care providers, and professional development activities; and c) the Gateways to Opportunity Registry. IDHS thanks the thousands of center-based staff, family child care providers and CCR&R staff for their support in the care and education of Illinois children. The Illinois Department of Children & Family Services is the agency responsible for licensing child care providers.

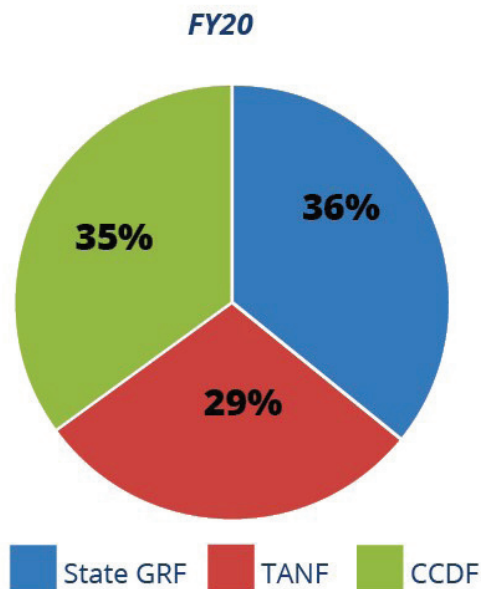
The World Health Organization declared the outbreak, a Public Health Emergency of International Concern in January 2020 and a pandemic in March 2020.

The following are financial considerations the Illinois Department of Human Services (IDHS) has taken in response to the economic strain the child care space has experienced during the COVID-19 pandemic.

- **For Child Care Assistance Program (CCAP) Providers (applicable through June 30, 2020):**
 - Attendance Exemption - For service months March through June, IDHS has paid for all eligible days of care regardless of attendance, if providers certify that they will continue to pay their staff for CCAP. This is available whether their program is open or closed during the month.
 - 30% Rate Enhancement - For programs that remained open and provided emergency child care to children of essential workers, IDHS has paid a 30% rate increase over the typical CCAP rate.
 - Emergency Stipends - Programs that remained open to provide emergency child care were eligible to receive a one-time stipend to help offset the cost of PPE/Cleaning supplies and staff costs. Stipends ranged from \$750 to \$3,000.
- **For CCAP Clients (applicable through June 30, 2020):**
 - IDHS automatically extended CCAP eligibility for six months for cases with eligibility ending March through June.
 - Per federal guidelines that mandate cost sharing, all parent/guardian co-pays were reduced to \$1.
 - Eligibility for CCAP was expanded to Priority Essential Workers who did not have the option to work remotely and had no other options for child care. They have been charged \$1 co-pays for use of the program.
- **FY21: Child Care Restoration Grant**
 - In continuance of our commitment to supporting the child care space during these times, at the end of FY20, IDHS was collaborating with DCEO to develop a \$270 million grant program for FY21. This grant was designed to provide additional relief to licensed providers during the reopen period that is more expansive as it is applicable to address costs beyond the CCAP market. All licensed child care providers who can demonstrate they are experiencing business disruptions due to diminished capacities during the COVID-19 pandemic would be eligible.

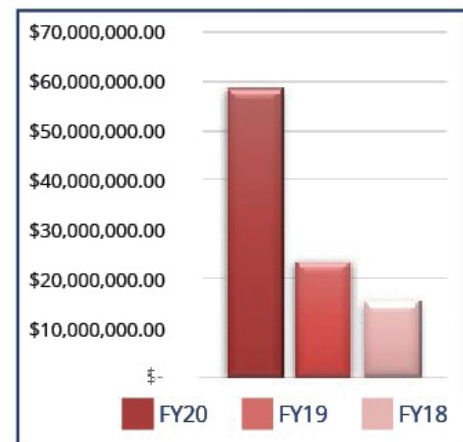
The following chart shows the Child Care Expenditures for FY20, FY19 and FY18

	FY20	%	FY19	%	FY18	%
State GRF	\$365,642,166	36%	\$352,314,209	39%	\$357,303,737	41%
TANF	\$300,846,386	29%	\$281,521,675	31%	\$319,452,925	36%
CCDF	\$356,113,195	35%	\$279,184,118	30%	\$199,196,621	23%
TOTAL	\$1,022,601,747	100%	\$913,020,002	100%	\$875,953,283	100%



Quality Expenses

	\$ 58,679,925
	\$ 23,350,472
	\$15,306,660



Federal Priorities

The IDHS Office of Early Childhood sets policy and develops programs consistent with the federal Administration for Children and Families (ACF) Office of Child Care's philosophy and vision. ACF's overall goal is "healthy, happy and successful children." Its philosophy includes a focus on the continuum of high-quality care for children from birth to age 12 and partnerships across child care, education, Head Start and health for a broader delivery system that expands family choices.

In November 2014, Congress reauthorized the Child Care and Development Block Grant (CCDBG). This was an historic re-envisioning of child care. The four major topic areas of the law are:

- Protect the health and safety of children in child care.
- Help parents make informed consumer choices and access information to support child development.
- Provide equal access to stable, high quality child care for low-income children.
- Enhance the quality of child care and the early childhood workforce.

During FY20, the IDHS Child Care Assistance Program continued to address the provisions of the CCDBG Act of 2014, while administering the CCAP programs under the previous federal priorities.

Child Care Assistance Program (CCAP)

IDHS works with local Illinois communities to provide low-income families with access to affordable, quality child care. The Child Care Assistance Program (CCAP) serves children from birth to 12 years of age; and children of 13 years of age but below 19 years of age who are physically and/or mentally incapable of self-care or under court supervision.

The Child Care Assistance Program (CCAP) has two primary goals:

- To support qualifying low-income families by providing child care subsidies. This allows parents to maintain employment or educational activities, thereby decreasing dependence on public assistance; and
- To allow families access to multiple options for affordable, quality child care, early education, and after school programs that offer children the opportunity to grow, learn and be cared for in safe, nurturing settings that are culturally and developmentally appropriate.

Child Care Resource and Referral (CCR&R) Services

- Engage families with consumer education on child care options and quality as well as information about child care financial assistance (CCAP subsidy).
- Engage child care providers to identify the availability of child care.
- Provide families seeking a child care provider a list of referrals that meet the families' needs.
- Provide training and technical assistance for child care providers.
- Promote and assist child care providers to meet higher quality.
- Referral to CCAP, other IDHS programs, and community services.

Site Administered Child Care

- The portion of the IDHS Child Care Assistance Program managed by licensed child care providers and/or home networks who have a contract with the Department.
- These providers determine eligibility and bill IDHS directly for child care services that they provide to a contracted number of children enrolled in the Child Care Assistance Program.

CCAP Enrollment

	FY20	FY19	FY18
Children Served	193,715	193,088	206,842
Families Served	108,316	107,130	115,521
Monthly Average of children	126,070	124,672	127,556
Monthly Average of families	71,242	71,106	72,345

Profile of Children Participating in CCAP

- 75.4% are in licensed care in FY 20, compared to 75% in FY19 and 74% in FY18
- 15.3% are in the care of relatives
- 9.3% are in the care of license-exempt centers, non-relative in child's home and provider's home

Number of Children by Age Participating in CCAP in March 2020

Child's Age	FY20		FY19		FY18	
	Enrolled in CCAP	%	Enrolled in CCAP	%	Enrolled in CCAP	%
0-14 Months	10,358	8.0%	10,442	8.4%	8,745	7%
15-23 Months	10,227	7.9%	9,839	7.9%	9,756	8%
2 Years	15,705	12.1%	14,801	11.9%	13,592	11%
3-4 Years	31,573	24.3%	29,860	24.0%	26,275	22%
5 Years	12,079	9.3%	11,374	9.2%	12,717	11%
6-12 Years	48,779	37.6%	47,180	38.0%	47,849	40%
13 Years +	1,093	0.8%	728	0.6%	547	0.46%
Total	129,814	100%	119,481	100%	119,481	100%

Profile of families participating in the CCAP in March 2020

- 96.9% of families received subsidies because of employment.
- 2.7% of families had TANF as a source of income.

Profile of families participating in the CCAP in March 2019

- 97.2% of families received subsidies because of employment.
- 2.9% of families had TANF as a source of income.

Profile of families participating in the CCAP in March 2018

- 97.1% of families received subsidies because of employment.
- 3.5% of families listed TANF as a source of income.



Annual Income Guidelines by Family Size

A family is considered income eligible when the combined gross monthly base income (earned and unearned) of all family members is at or below the amounts listed below for the corresponding family size. In two-parent families both incomes must be combined to determine eligibility. Two-parent families include those with 2 or more adults living in the home, such as the applicant and his or her spouse or parents of a common child in the home.

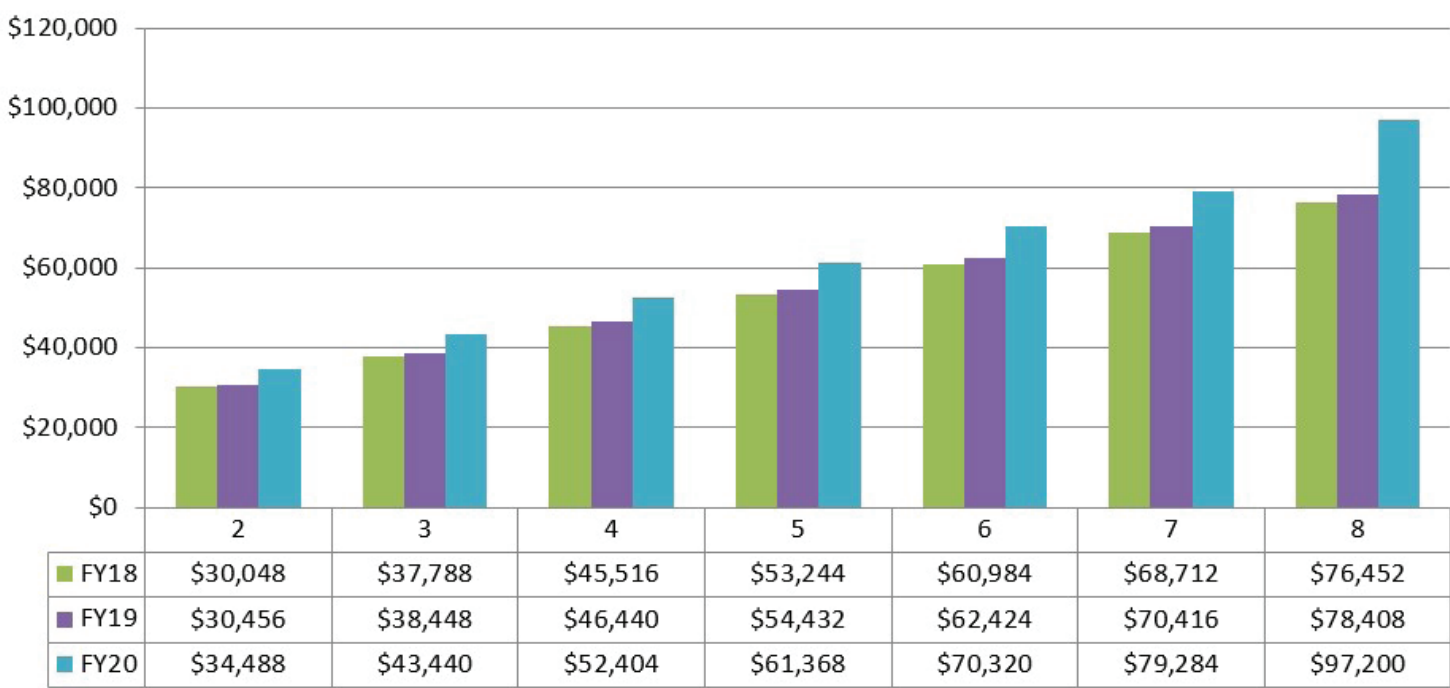
Income for a new application must be at 200% or below of the Federal Poverty Level (FPL) for the family to be income eligible for CCAP.

Family income must be at or below 225% FPL for a family to receive another 12-month eligibility period at redetermination.

Existing case being redetermined will be eligible for a 3-month Graduated Phase-out period with family income above 225% FPL and below 85% State Median Income (SMI).

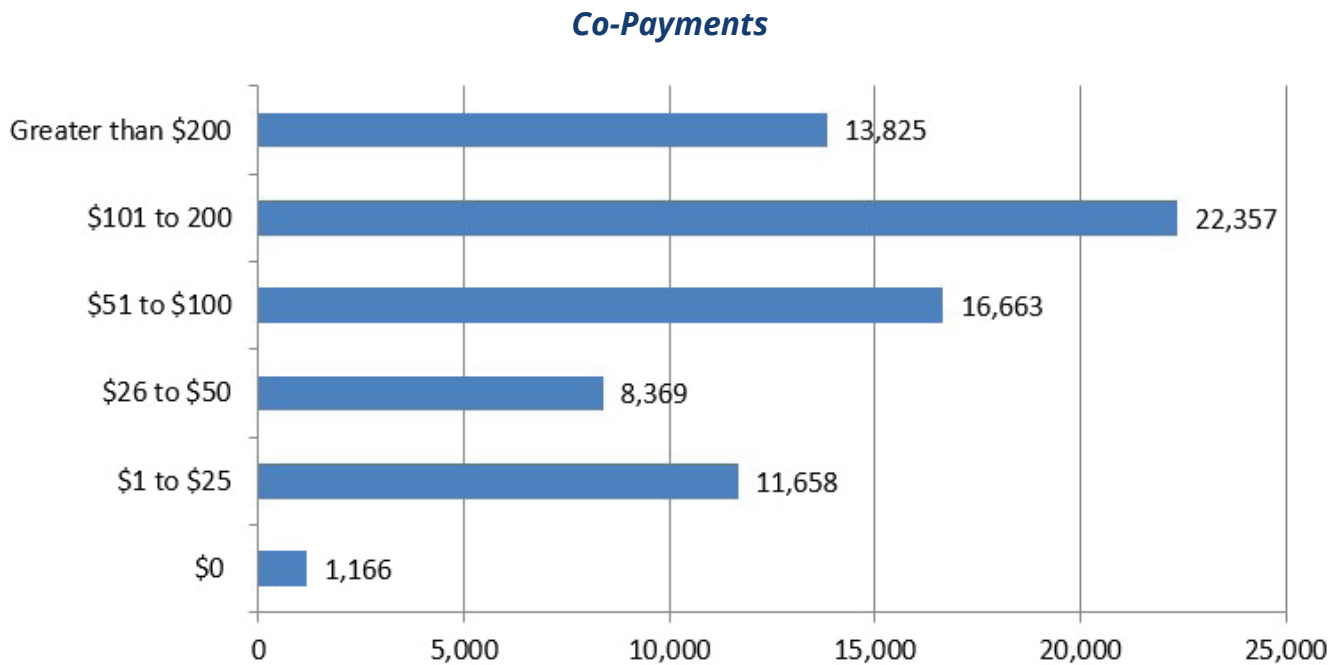
The family is no longer eligible for CCAP any time income exceeds 85% SMI.

Income Guidelines by Family Size



Number of CCAP families by Monthly Co-Payment Amount (FY20)

Parents who have been approved for child care benefits are required to help pay for the cost of their child care. If the co-payment is more than the total charges, the parent pays the lesser amount to the provider and no payment is made by the state. The amount of the parent co-payment is based on gross monthly income and family size. Parent co-payments will be reduced by half during the months of September through May when all of the children in care are school age (age 5 or older as of the month of September of each school year) and are approved for less than five hours of care.



Types of Child Care settings

Child Care Centers & Programs - Provide care for groups of children outside of a residential setting. Children are usually grouped by age. Types of centers include: child care, Early Head Start/Head Start, State pre-kindergarten, preschools, school age programs, and summer programs.

- Licensed Child Care Centers - must meet Illinois Department of Children and Family Services (IDCFS) standards for health and safety including child to staff ratios and required space per child.
- Licensed-Exempt Child Care Centers - are also recognized by Illinois, such as those serving children three years of age and older and operated by public or private elementary or secondary schools, faith-based organizations, institutions of higher education or other accredited schools registered with the Illinois State Board of Education. Since these settings are not licensed by IDCFS, they are not held to standards for staff to child ratios or maximum group size set by IDCFS.

Family Child Care - Child care is offered in a homelike setting.

- Licensed Family Child Care - may care up to eight children (including their own), or up to 12 children with an assistant.
- License-Exempt Family Child Care - (such as Family, Friend and Neighbor) may care for three or fewer children (including their own), or children from one family. This care can be offered in the caregiver's home or in the child's home.

Profile of Child Care Providers Participating in CCAP in FY20

- **79%** of the license-exempt child care providers cared for relative children.
- **73%** of all CCAP providers were license exempt.

CCR&R Services for Child Care Providers Participating in CCAP

- Administration of parent applications.
- Determination of provider eligibility for CCAP.
- Processing of Monthly Child Care Certificates.
- Technical assistance to providers regarding CCAP.
- Assist with ensuring that license-exempt providers are notified about complete background check and training requirements.
- Provide CCAP required health, safety and child development training.

Number of Providers Receiving CCAP Payments

	FY20	FY19	FY18
Licensed Providers			
Child Care Centers	2,277	2,411	2,485
Family Child Care Homes	4,636	4,529	4,755
Group Child Care Homes	430	397	423
Total	7,343	7,337	7,663
License Exempt Providers			
LE Centers	842	690	690
Family Child Care Homes:			
Non-relative in provider's home	3,313	3,685	4,457
Relative in provider's home	8,490	8,697	10,521
Non-relative in child's home	1,831	2,008	2,727
Relative in child's home	4,979	5,254	6,655
Total	19,455	20,407	25,050
Total all providers	26,798	27,744	32,713

Child Care Supply

The CCR&Rs support child care providers by referring families to their child care programs. The referral services are available at no cost to licensed centers, family child care homes, group child care homes listed in the provider database as well as to license-exempt centers and homes that choose to be included in the provider database. The provider database information is shown in the next table.



Statewide Child Care Database

	FY20		FY19		FY18	
	# of providers	Child Capacity	# of providers	Child Capacity	# of providers	Child Capacity
Licensed Family Homes	6,371	59,450	7,132	69,493	7,445	72,673
LE Family Homes	454	1,302	491	1,459	868	2,573
Total	6,825	60,752	7,623	70,952	8,313	75,246
Licensed Centers	2,830	219,598	3,015	247,952	3,146	253,026
LE Centers	2,195	142,086	2,421	169,287	2,383	167,519
Total	5,025	361,684	5,436	416,836	5,529	420,545

Child Care Demand

There are two dimensions of the “demand” for child care in any community.

1. The number of children needing child care compared to the child care capacity available to meet the needs, and
2. The unique requirements of families for their specific child’s needs, such as the child’s age, type of care desired, parent’s work/school schedule, location, special needs of the child and cost.

Snapshot of Families Receiving Child Care Referrals in FY20

- **8,680 families received child care referrals by phone***
- **81% of families required care due to employment**

**With the ExceleRate site for the provider search (online referrals), parents no longer have to register for an account in order to search, therefore families served online is no longer tracked.*

Snapshot of Families Receiving Child Care Referrals in FY19

- **10,606 families received child care referrals by phone or online**
- **90% of families required care due to employment**

Snapshot of Families Receiving Child Care Referrals in FY18

- **11,435 families received child care referrals by phone or online**
- **92% of families required care due to employment**

Schedules Requested for Children and Offered by Providers in FY20

Schedule	Requested for Children	Offered by Family Child Care Homes	Offered by Child Care Centers	Offered by Providers Total
Standard Hours*	10,426	5,665	4,624	10,289
Evening	822	1,417	1,073	2,490
Weekend	669	452	17	469
Overnight	278	162	8	170
Rotating	325	2,054	744	2,798
Temp/Emergency	71	2,306	224	3,030
Drop In	48	2,271	771	3,042

**A standard schedule is full-time care offered during traditional day time work hours.*

Number of Children for Whom Child Care was requested by Age

Age of Child	FY20		FY19		FY18	
	Requests		Requests		Requests	
Birth to 2 years	4,292	36%	5,821	35%	4,552	34%
2-year-old	1,701	14%	2,124	13%	1,803	13%
3-4-year-old	2,659	22%	3,436	21%	2,784	21%
5- year old	776	6%	1,092	7%	882	7%
School Age	2,669	22%	4,047	24%	3,380	25%
Total	12,097	100%	16,527	100%	13,401	100%

Child Care Request by Type of Care

Type of Care	FY20		FY19		FY18	
	Requests		Requests		Requests	
Child Care Center	10,366	52%	19,483	58%	15,417	59%
Family Homes	9,477	48%	13,766	41%	10,553	40%
Total	19,843	100%	33,435	100%	26,134	100%

Data Context

Much of the Child Care Demand data are from the parent customer and child care databases compiled by the local CCR&Rs. Therefore, the data presented does not include all families and children requiring child care services in Illinois. Most families do not receive child care assistance and many families find child care services through friends, families, advertisements and other means. Additionally, many license-exempt child care programs are not listed in the provider database. Because of these factors, it is important to note that this report is only one means of examining the larger child care supply and demand picture in Illinois.



Quality Improvement Programs

During FY20, the federal Child Care and Development Fund (CCDF) required at least nine percent of federal funds be allocated for the improvement of child care quality, plus an additional three percent for quality for infants and toddlers. These funds were used to support the IDHS Office of Early Childhood **Quality Improvement Initiatives**. The program's overall goal is to increase the quality of child care available to all Illinois families. In all child care settings this goal is addressed with a multi-faceted, systematic approach that works to meet the individual needs of children, families, child care providers and communities. In FY20, IDHS contracted with 16 local CCR&R agencies and the Illinois Network of Child Care Resource and Referral Agencies (INCCRRA) to implement the quality services described on the following pages.



Pathways to Excellence for Child Care Programs

Maintaining a Quality Recognition and Improvement System

ExceleRate Illinois is a state-wide cross sector quality recognition and improvement system designed to make continuous quality improvement an everyday priority among early learning providers. The program establishes standards for helping infants, toddlers and preschool age children develop intellectually, physically, socially and emotionally. It provides a framework for early learning professionals to identify opportunities for improvement, increase their skills and take steps to make positive changes.

ExceleRate includes licensed child care centers and licensed family child care homes, Head Start and State Preschool for All (PFA) programs.

ExceleRate Illinois recognizes early learning providers for their ongoing efforts to improve the quality of their care by awarding Circle of Quality designations:

- The Licensed Circle of Quality tells you that the program meets state licensing standards for quality. It is the foundation for quality.
- The Bronze Circle of Quality recognizes the qualifications of program staff. It tells you that the program has completed ExceleRate Illinois trainings, have met or are working towards qualifications and are engaged in continuous quality improvement.
- The Silver Circle of Quality recognizes that the program has met quality goals. Silver Circle programs meet or go beyond quality standards in three areas: learning environment and teaching quality; administrative standards; and training & education. Programs are actively engaged in continuous quality improvement.
- The Gold Circle of Quality recognizes programs that meet or go beyond the highest quality goals. Gold Circle programs have met the highest quality standards in three areas: learning environment and teaching quality; administrative standards; and training & education. Programs are actively engaged in continuous quality improvement.



The following table shows data for licensed centers and licensed homes, number of CCAP children enrolled by Circles of Quality.

	FY20				FY19				FY18			
	Centers	Children Enrolled	Homes	Children Enrolled	Centers	Children Enrolled	Homes	Children Enrolled	Centers	Children Enrolled	Homes	Children Enrolled
Bronze	98	2,755	178	1,250	106	2,836	171	1,155	128	3,141	169	940
Silver	362	10,189	135	1,545	374	10,914	161	1,690	376	10,645	183	1,647
Gold	429	20,111	22	164	455	20,301	21	158	466	19,466	22	174
Total	889	33,055	335	2,959	935	34,051	353	3,003	970	33,252	374	2,761
non-CCAP		42,139		910		44,746		1,084		47,250		1,316
Total	889	75,194		3,869	935	78,797		4,087	970	80,502	374	4,077

** Enrollment /CCAP numbers are reported at time of initial application and updated annually.*

Illinois is one of only a handful of states that has implemented a quality improvement program for License-Exempt Family Child Care providers (LEFCC). LEFCC providers have the opportunity to participate by completing Training Tiers consisting of 16, 3-hour modules. The Training Tiers are described below:

	FY20		FY19		FY18	
	LE Family Homes	CCAP Children enrolled	LE Family Homes	CCAP Children enrolled	LE Family Homes	CCAP Children enrolled
Tier 1	557	1,105	552	1,084	555	1,091
Tier 2	183	372	184	364	176	361
Tier 3	1,071	2,416	992	2,197	721	1,621
Total	1,811	3,893	1,728	3,645	1,452	3,794

** CCAP numbers reported at time of initial application.*

- Training Tier 1 modules are: Overview of Child Development; Health Issues in Group Care; Nutrition Issues in Group Care; and Safety Issues in Group Care.
- Training Tier 2 modules are: Observation and Guidance; Learning Happens in Relationships; Family & Community Relationships; and Personal & Professional Development.
- Training Tier 3 modules are: Child Growth and Development for Birth to 8 Months; Child Growth and Development for 8 - 18 Months; Child Growth and Development for 18 - 36 Months; Preschool Child - Social/Emotional Development; Preschool Child - Physical Development; Preschool Child - Language Development; Preschool Child - Cognitive Development; and School Age Development.
- The Gateways ECE Credential Level 1 is achieved upon completion of all three tiers.

Pathways to Excellence for Child Care Providers

Maintaining Strong Professional Development and Supportive Workforce Initiatives

Responsive, well-qualified practitioners are one of the most important factors in child care settings. IDHS provides professional development opportunities to child care providers. These services are available to child care providers listed on the statewide database, including licensed and license-exempt practitioners. The following pages give some data on these programs for FY20.

The Illinois Trainers Network (ITN) provides training to individual trainers and facilitators as well as child care providers on topics such as ECE Credential Level 1, developmentally appropriate practices, Program Infant Toddler Care series (PITC), School Age and Youth Development Level 1, Early Childhood Developmental Screening, and others. Child care providers can access these trainings through their local CCR&Rs.

Training Activity

ExceleRate Illinois™ Training

	FY20	FY19	FY18
Number of participants	2,513	6,627	2,660

*Some of the ExceleRate Illinois-approved topics are multi-session trainings.

*ExceleRate Illinois Training are part of the Illinois Trainer's Network

Illinois Trainers Network (ITN) Training

	FY20	FY19	FY18
Number of ITN curricula offered	5	6	5
Number of participants	1,773	11,833	23,222

*Some of the ITN curricula are multi-session trainings.

*Number of ITN Curricula does not include ExceleRate training curricula.

CCR&R Training Offered

	FY20	FY19	FY18
Number of training sessions held	1,384	1,057	1,275
Number of training participants	17,577	14,337	16,083
Number of training hours achieved	53,524	38,713	48,967

Online Training

	FY20	FY19	FY18
Number of online training topics offered	82	75	74
Number of online training participants	220,524	195,920	337,370
Number of online training hours achieved	481,895	408,940	674,150



Gateways to Opportunity Professional Development System

The Gateways to Opportunity Professional Development System provides supports for professionals working with children, youth and families. These supports include Credentials; the Gateways Scholarship Program; the Great START Wage Supplement program; Professional Development Advisors; and the Gateways to Opportunity Registry.

Great START (Strategy to Attract and Retain Teachers)

Great START is a wage supplement program available to the lowest wage earners employed by licensed child care centers and family child care homes; it recognizes those who have achieved an educational level higher than the one required by IDCFS Licensing Standards, and recipients must remain employed by the same program. Participants renew their eligibility every six months.

	FY20	FY19	FY18
Total Participants	3,938	3,328	3,321

Gateways to Opportunity Scholarship Program

The Gateways Scholarship Program is available to individuals employed by licensed child care centers and licensed family child care homes. The scholarship enables practitioners to earn degrees, certificates or credentials in early care and education and school age child care.

	FY20	FY19	FY18
Family Child Care Practitioners	119	99	88
Child Care Center Staff	569	512	470
Credits Taken	4,695	4,491	4,894
Degrees Completed	25	37	38

Gateways to Opportunity Registry

The Gateways to Opportunity Registry (Registry), administered by INCCRRA, is a resource and a tool to drive the quality and accountability of the professional development that is available to early learning, school-age and youth practitioners. It is also used to track the CCAP provider training completion. Anyone who works with or on behalf of children, youth and families in Illinois can become a member of the Gateways Registry. As of June 30, 2020, the Registry membership was 108,722 a decrease of 3,778 members over FY19. The Registry membership includes licensed and license exempt Day Care Centers, Family Day Care Homes, and Group Day Care Homes. Registry membership is required by IDCFS Licensing Standards for licensed programs.

Type of Program and Position (Where Registry Members are Working)

Based on employment data for the 108,722 current Registry members:

- 4% work in Indirect Service, such as child care resource and referral and higher education.
- 96% work in Direct Services
 - 66% work in Licensed Child Care Centers.
 - 14% work in Family/Group Child Care Homes.
 - 20% work in License-exempt child care settings.

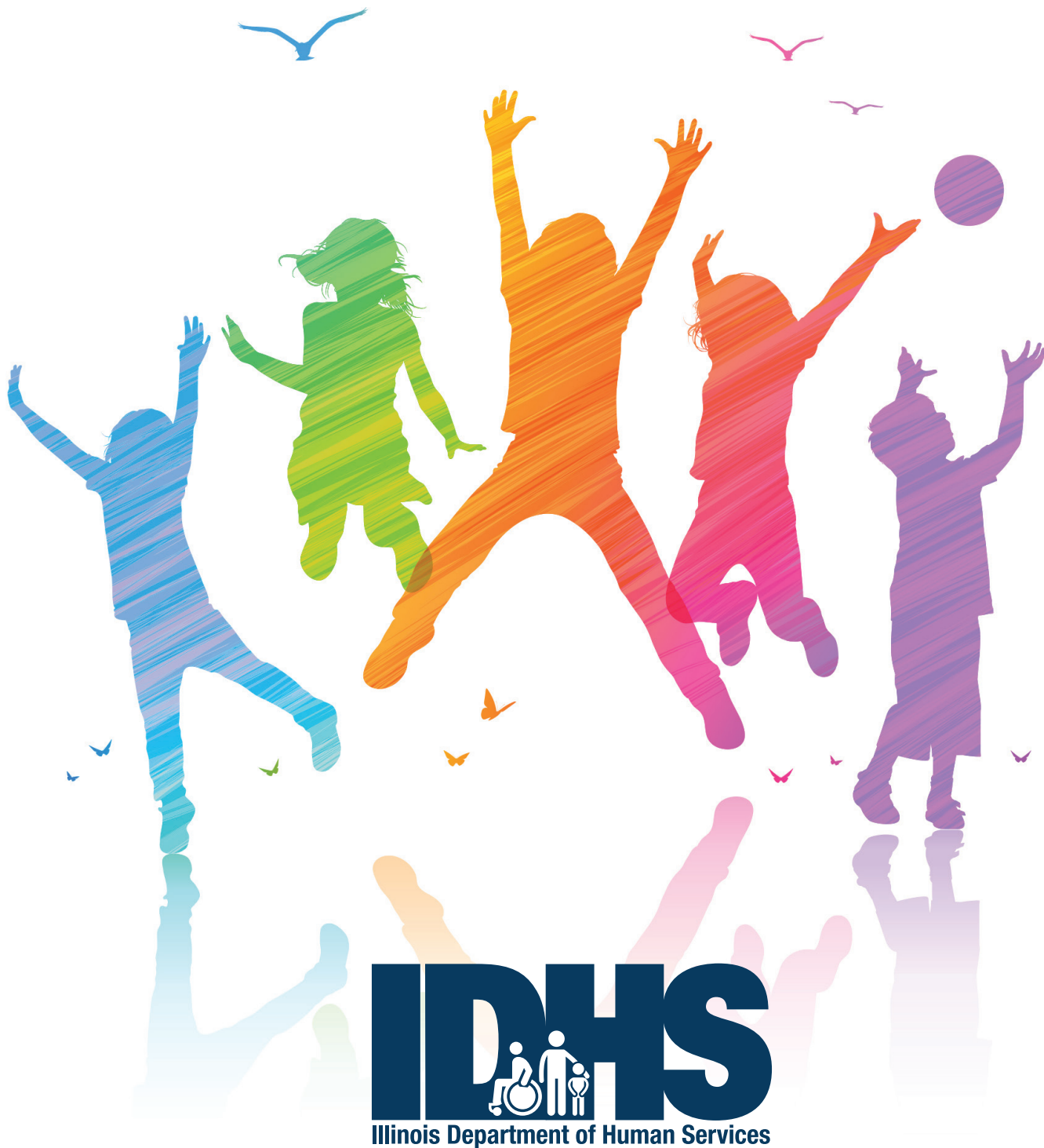
Gateways to Opportunity Credentials

The Gateways Credentials validate an individual's educational attainment and professional experience. The credentials are recognized by the State of Illinois in the IDCFS Licensing Standards for Day Care Centers and in the IDHS Great START program. ExceleRate Illinois™ has credential requirements for the Bronze, Silver and Gold Circles of Quality. A variety of credentials are available for practitioners who work with, or on behalf of, children, youth and families.

- * Illinois Director Credentials (IDC): The IDC is appropriate for directors and program coordinators of early childhood and school-age child care settings. It is awarded at three (3) levels: Associate, Bachelor, and Graduate. The credential has requirements in: General Education; Education specific to Early Childhood Education/Child Development; Education specific to Management and Administration; and Work Experience and Professional Contributions to the field.
- * ECE Credential: is appropriate for professionals working in early childhood settings. It is awarded at six (6) levels ranging from Level 1 (an entry level credential earned by completing a 48 clock-hour training covering many topics related to leading programs for this age group, birth to 8 years of age, including but not limited to human development) to Level 6, which is the Graduate Level Credential. ECE Credential Levels 2-6 have requirements in General Education, Early Childhood Education, Work/Practicum Experience and Professional Contributions to the field.
- * Infant Toddler Credential (ITC): is a specialization for the ECE Credential and is appropriate for professionals working with children younger than three years of age. It is awarded at five levels from Level 1 (12 ECE credits and 3 Infant Toddler credits) to Level 6 (Graduate Degree). Levels 2-6 have requirements in General Education, Early Childhood Education specific to Infants/Toddlers, Work/Practicum Experience specific to Infants/Toddlers, and Professional Contributions specific to Infants/Toddlers.
- * School-Age/Youth Development (SAYD) Credential Level : is an entry level/48 clock-hour training covering many topics related to leading programs for this age group (8 – 18 years of age), including but not limited to human development; health and safety; program development; community relations; communication with parents, and others. SAYD Credential Levels 2-5 have requirements in General Education, Early Childhood Education, Work/Practicum Experience and Professional Contributions for the field.

- * Family Child Care Credential (FCC): is for professionals working as a family child care provider with children ages birth through 12 years. It is awarded at four levels from Level 2 (6 credits in ECE/SA plus 3 credits in FCC) to Level 5 (Baccalaureate Degree). Levels 2-5 have requirements in General Education, Early Childhood Education, Family Child Care (FCC), Work/Practicum Experience and Professional Contribution specific to ECE and FCC.
- * Family Specialist Credential (FSC): is for direct service professionals who work with families using a strength-based model to promote optimal child care family outcomes. It is awarded at four levels from Level 2 (6 credits if FSC content) to level 5 (Baccalaureate Degree). Level 2-5 have requirements in General Education, Education specific to Family Specialists, Work/Practicum Experience and Professional Contribution specific to FSC.
- * Technical Assistance Credential (TA): is designed for professionals working in a variety of roles that relate to relationship-based professional development, such as technical assistance providers, coaches, mentors, and professional development advisors. It is awarded at three (3) levels: Associate, Bachelor, and Graduate. This credential has requirements in: General Education; Education specific to Early Childhood/School Age (EC/SA), and EC/SA coaching, mentoring or technical assistance, work experience specific to Early Childhood/School Age (EC/SA), EC/SA coaching or technical assistance, and Professional Contributions to the field.

Credential	First Awarded In	FY18	FY19	FY20	Total Awarded
ECE Credential - Level 1	FY06	16,874	7,167	4,970	43,529
ECE Credential – Levels 2-6	FY08	1,840	1,140	1,188	14,160
Infant Toddler Credential	FY09	774	492	648	6,142
Illinois Director Credential	FY00	493	293	302	3,355
SAYD Credential - Level 1	FY11	180	10	6	458
School-Age Credential-Levels 2-6	FY16	51	30	44	397
Youth Development Credential	FY16	**	**	**	49
Family Child Care Credential	FY16	83	58	75	476
Family Specialist Credential	FY 16	123	184	219	779
Technical Assistance Credential		11	2	9	84
Total		20,357	9,376	7,461	69,165



For more detailed information about any of the programs contained in this report, visit:

www.dhs.state.il.us

www.ilgateways.com

www.excelerateillinois.com

www.inccrra.org

This publication is created to comply with State Statute 20 ILCS 505/5.15.